

# MATCH REPORT



Matchday 19  
SERIE A CHAMPIONSHIP 2025-2026



**LECCE**



**ROMA**

Lecce 06/01/2026  
ETTORE GIARDINIERO - VIA DEL MARE 18:00

Lecce 06/01/2026 ETTORE GIARDINIERO - VIA DEL MARE 18:00

**LECCE**

**0-2**

**ROMA**



## LINE-UPS

### LECCE

|    |               |             |
|----|---------------|-------------|
| 30 | FALCONE (GK)  |             |
| 17 | DANILO VEIGA  |             |
| 4  | GASPAR        | Yellow Card |
| 44 | TIAGO GABRIEL |             |
| 25 | GALLO         |             |
| 77 | KABA          |             |
| 20 | RAMADANI      |             |
| 93 | MALEH         | Yellow Card |
| 19 | BANDA         | Yellow Card |
| 22 | CAMARDA       |             |
| 23 | SOTTIL        |             |



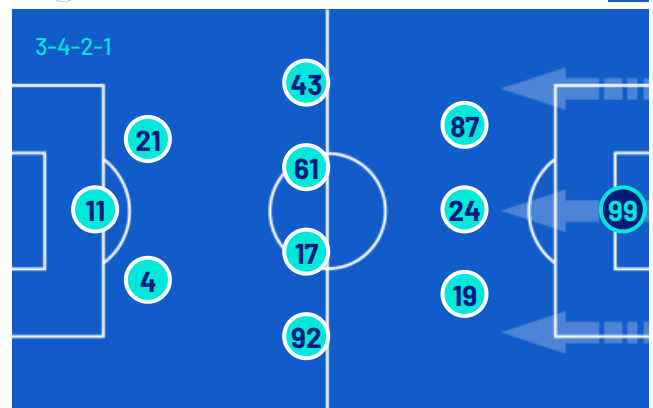
### Bench

|    |              |  |
|----|--------------|--|
| 32 | SAMOOJA (GK) |  |
| 3  | NDABA        |  |
| 5  | SIEBERT      |  |
| 6  | ÁLEX SALA    |  |
| 9  | ŠTULIĆ       |  |
| 11 | N'DRI        |  |
| 13 | MATÍAS PÉREZ |  |
| 14 | HELGASON     |  |
| 18 | JEAN         |  |
| 21 | KOUASSI      |  |
| 28 | GORTER       |  |
| 36 | MARCHWIŃSKI  |  |
| 50 | PIEROTTI     |  |
| 80 | KOVAČ        |  |

Assistant Coach: **FABRIZIO DEL ROSSO**

### ROMA

|      |             |    |
|------|-------------|----|
| (GK) | SVILAR      | 99 |
|      | GHILARDI    | 87 |
|      | ZIÓŁKOWSKI  | 24 |
|      | ÇELIK       | 19 |
|      | WESLEY      | 43 |
|      | PISILLI     | 61 |
|      | M. KONÉ     | 17 |
|      | EL SHAARAWY | 92 |
|      | DYBALA      | 21 |
|      | CRISTANTE   | 4  |
|      | E. FERGUSON | 11 |



### Bench

|      |          |    |
|------|----------|----|
| (GK) | VÁSQUEZ  | 32 |
| (GK) | ŽELEZNY  | 91 |
|      | ANGELIÑO | 3  |
|      | DOVBYK   | 9  |
|      | TSIMIKAS | 12 |
|      | SOULÉ    | 18 |
|      | ROMANO   | 60 |
|      | MIRRA    | 76 |
|      | LULLI    | 77 |

Head Coach: **GIAN PIERO GASPERINI**

Referee: **JUAN LUCA SACCHI**  
Assistant referee: **GAMAL MOKHTAR**  
Assistant referee: **ALEX CAVALLINA**

Fourth official: **PARIDE TREMOLADA**  
V.A.R.: **MATTEO GARIGLIO**  
A.V.A.R.: **DANIELE CHIFFI**

Lecce 06/01/2026 ETTORE GIARDINIERO - VIA DEL MARE 18:00



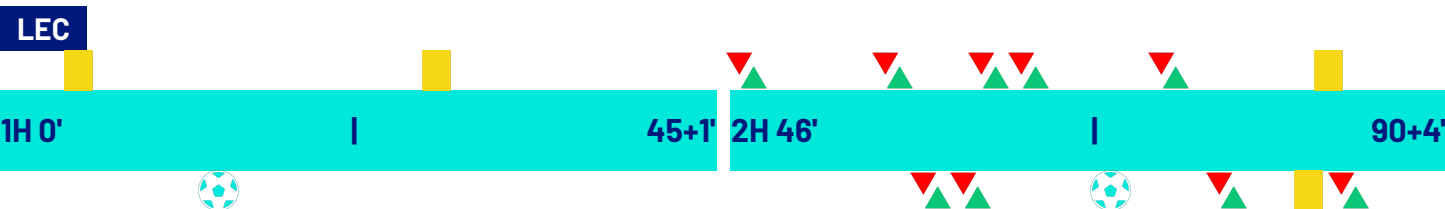
LECCE

0-2

ROMA



## MATCH EVENTS



| LECCE | ROMA |
|-------|------|
|-------|------|

0

2

|                                     |     |             |                |   |             |
|-------------------------------------|-----|-------------|----------------|---|-------------|
| LAMECK BANDA                        | 5'  | Yellow Card |                |   |             |
|                                     |     |             | 14'            | EVAN FERGUSON                               | Goal        |
|                                     |     |             | 14'            | (PAULO DYBALA)                              | Assist      |
| YOUSSEF MALEH                       | 28' | Yellow Card |                |   |             |
| KONAN N'DRI   LAMECK BANDA          | 46' | Red Card    | Green Triangle |   |             |
| SANTIAGO PIEROTTI   RICCARDO SOTTIL | 56' | Red Card    | Green Triangle |   |             |
|                                     |     |             | 60'            | ARTEM DOVBYK   EVAN FERGUSON                | Goal        |
|                                     |     |             | 60'            | KONSTANTINOS TSIMIKAS   STEPHAN EL SHAARAWY | Assist      |
| OLAF GORTER   YLBER RAMADANI        | 64' | Red Card    | Green Triangle |   |             |
| NIKOLA ŠTULIĆ   FRANCESCO CAMARDA   | 64' | Red Card    | Green Triangle |   |             |
|                                     |     |             | 71'            | ARTEM DOVBYK                                | Goal        |
|                                     |     |             | 71'            | (NICCOLÒ PISILLI)                           | Assist      |
| PÓRIR HELGASON   MOHAMED DRAME      | 75' | Red Card    | Green Triangle |   |             |
|                                     |     |             | 79'            | MATÍAS SOULÉ   PAULO DYBALA                 | Goal        |
|                                     |     |             | 86'            | BRYAN CRISTANTE                             | Yellow Card |
| K. GASPAR                           | 86' | Yellow Card |                |   |             |
|                                     |     |             | 86'            | ALESSANDRO ROMANO   ARTEM DOVBYK            | Goal        |

### Legend:

- Goals
- Penalty
- Yellow Card
- Red Card
- Double Yellow Card
- Owngoal
- Assist
- Substitution

Lecce 06/01/2026 ETTORE GIARDINIERO - VIA DEL MARE 18:00



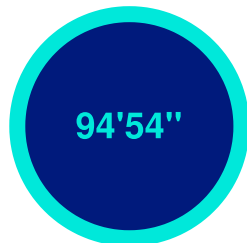
LECCE

0-2

ROMA



## GAME TIME



Effective  
played time:  
56%

1st Half - 2nd Half  
26'55" - 26'25"



## BALL POSSESSION

LECCE

ROMA

### QUARTERS BALL POSSESSION

| 1H | 0'-15'  | 2H      | 46'-60' |
|----|---------|---------|---------|
|    | 60.61%  | 39.39%  |         |
|    | 16'-30' | 61'-75' |         |
|    | 46.63%  | 53.37%  | 49.59%  |
|    | 31'-45' | 76'-94' |         |
|    | 64.74%  | 35.26%  | 34.69%  |
|    |         |         | 65.31%  |

## TEAM STATS

|                                     | LEC  | ROM  |
|-------------------------------------|------|------|
| Attempts                            | 6    | 10   |
| Attempts on target                  | 1    | 3    |
| Attempts on target from penalty box | 2    | 6    |
| Post                                |      |      |
| Bar                                 |      |      |
| Attempts off target                 | 1    | 5    |
| Blocked Shots                       | 4    | 2    |
| Scoring Chances                     | 1    | 2    |
| Key Passes                          | 3    | 4    |
| Assists                             |      | 1    |
| Fouls Committed                     | 10   | 20   |
| Corners                             | 2    | 2    |
| Offsides                            | 2    | 2    |
| Cross Completed/Total               | 3/18 | 2/12 |
| Dribbling                           | 2    | 6    |
| Passes Completed                    | 335  | 331  |
| Passes Completed/Attempted (%)      | 77   | 78   |
| Passes Final Third                  | 73   | 94   |
| Balls played forward                | 158  | 161  |
| Long Passes                         | 38   | 28   |
| Saves                               | 1    | 1    |
| Gained Possessions                  | 69   | 64   |

Lecce 06/01/2026 ETTORE GIARDINIERO - VIA DEL MARE 18:00

LECCE

0-2

ROMA



## PLAYER STATS

| LECCE |               | M   | GC | OG | S | AS | CL | LB | FYC | SYC | RC |    |    |      |    |    |     |     |    |  |  |
|-------|---------------|-----|----|----|---|----|----|----|-----|-----|----|----|----|------|----|----|-----|-----|----|--|--|
|       |               | M   | G  | OG | A | AT | PT | SC | FS  | BP  | AS | KP | P  | P(%) | PA | R  | FYC | SYC | RC |  |  |
| 30    | FALCONE       | 95' | 2  |    | 1 |    |    | 29 |     |     |    |    |    |      |    |    |     |     |    |  |  |
| 17    | DANILO VEIGA  | 95' |    |    |   |    |    |    | 2   |     |    | 1  | 42 | 72   | 26 | 4  |     |     |    |  |  |
| 4     | GASPAR        | 95' |    |    |   |    |    |    |     |     |    |    | 35 | 89   | 5  | 15 | 1   |     |    |  |  |
| 44    | TIAGO GABRIEL | 95' |    |    |   |    |    |    | 4   |     |    |    | 48 | 92   | 3  | 14 |     |     |    |  |  |
| 25    | GALLO         | 95' |    |    |   |    |    |    |     |     |    |    | 46 | 75   | 22 | 6  |     |     |    |  |  |
| 77    | KABA          | 75' |    |    |   |    |    |    | 3   |     |    |    | 14 | 87   | 10 | 6  |     |     |    |  |  |
| 20    | RAMADANI      | 65' |    |    | 1 |    |    |    | 1   |     |    |    | 24 | 80   | 14 | 5  |     |     |    |  |  |
| 93    | MALEH         | 95' |    |    |   |    |    |    | 4   |     |    |    | 32 | 74   | 20 | 6  | 1   |     |    |  |  |
| 19    | BANDA         | 46' |    |    | 1 |    |    |    | 1   |     |    |    | 5  | 71   | 5  | 3  | 1   |     |    |  |  |
| 22    | CAMARDA       | 65' |    |    |   |    |    |    |     | 2   |    |    | 11 | 78   | 9  | 2  |     |     |    |  |  |
| 23    | SOTTIL        | 57' |    |    |   |    |    |    |     |     |    |    | 11 | 100  | 11 |    |     |     |    |  |  |
| 9     | ŠTULIĆ        | 31' |    |    | 2 |    |    |    |     |     |    |    | 9  | 81   | 6  | 2  |     |     |    |  |  |
| 11    | N'DRI         | 49' |    |    | 1 | 1  |    |    |     |     |    | 1  | 5  | 71   | 5  | 1  |     |     |    |  |  |
| 14    | HELGASON      | 20' |    |    |   |    |    |    |     |     |    | 1  | 5  | 71   | 3  |    |     |     |    |  |  |
| 28    | GORTER        | 31' |    |    |   |    |    |    |     |     |    |    | 17 | 89   | 8  | 3  |     |     |    |  |  |
| 50    | PIEROTTI      | 39' |    |    | 1 |    |    | 1  | 1   |     |    |    | 12 | 85   | 11 | 1  |     |     |    |  |  |
| ROMA  |               | M   | GC | OG | S | AS | CL | LB | FYC | SYC | RC |    |    |      |    |    |     |     |    |  |  |
| 99    | SVILAR        | 95' |    |    | 1 |    | 1  | 20 |     |     |    |    |    |      |    |    |     |     |    |  |  |
| 87    | GHILARDI      | 95' |    |    |   |    |    |    |     |     |    |    | 28 | 82   | 12 | 5  |     |     |    |  |  |
| 24    | ZIÓŁKOWSKI    | 95' |    |    |   |    |    |    | 1   |     |    |    | 22 | 88   | 2  | 9  |     |     |    |  |  |
| 19    | ÇELIK         | 95' |    |    |   |    |    |    | 1   |     |    |    | 46 | 74   | 12 | 9  |     |     |    |  |  |
| 43    | WESLEY        | 95' |    |    | 1 |    |    |    | 1   |     |    |    | 33 | 76   | 17 | 10 |     |     |    |  |  |
| 61    | PISILLI       | 95' |    |    | 1 |    |    | 1  |     |     | 1  |    | 24 | 68   | 12 | 3  |     |     |    |  |  |
| 17    | M. KONÉ       | 95' |    |    |   |    |    |    | 2   |     |    | 1  | 29 | 82   | 16 | 5  |     |     |    |  |  |
| 92    | EL SHAARAWY   | 61' |    |    | 1 |    |    |    | 1   |     |    |    | 22 | 81   | 14 | 2  |     |     |    |  |  |
| 21    | DYBALA        | 80' |    |    | 2 |    |    | 1  | 3   |     |    | 1  | 30 | 75   | 23 | 4  |     |     |    |  |  |
| 4     | CRISTANTE     | 95' |    |    | 2 |    |    |    |     |     |    | 1  | 41 | 82   | 30 | 6  | 1   |     |    |  |  |
| 11    | E. FERGUSON   | 61' | 1  |    | 2 | 2  |    |    |     |     |    |    | 10 | 76   | 7  | 2  |     |     |    |  |  |
| 9     | DOVBYK        | 27' | 1  |    | 1 | 1  |    |    |     |     |    | 1  | 6  | 100  | 6  |    |     |     |    |  |  |
| 12    | TSIMIKAS      | 35' |    |    |   |    |    |    | 1   |     |    |    | 11 | 100  | 8  | 5  |     |     |    |  |  |
| 18    | SOULÉ         | 16' |    |    |   |    |    |    |     |     |    |    | 6  | 75   | 2  | 1  |     |     |    |  |  |
| 60    | ROMANO        | 9'  |    |    |   |    |    |    |     |     |    |    | 2  | 100  |    | 2  |     |     |    |  |  |

## Legend

|      |                                |
|------|--------------------------------|
| FYC  | Yellow Card                    |
| OG   | Owngoal                        |
| BP   | Balls Played                   |
| SYC  | Double Yellow Card             |
| RC   | Red Card                       |
| G    | Goals                          |
| GC   | Goal Conceded                  |
| M    | Minutes Played                 |
| AS   | Assists                        |
| FS   | Fouls Suffered                 |
| A    | Attempts                       |
| AT   | Attempts on target             |
| SC   | Scoring Chances                |
| PT   | Posts                          |
| S    | Saves                          |
| CL   | Clearences                     |
| LB   | Long Ball                      |
| P(%) | Passes Completed/Attempted (%) |
| KP   | Key Passes                     |
| PA   | Balls played forward           |
| P    | Passes Completed               |
| R    | Gained Possessions             |

## PLAYERS RANKING

| Attempts |                   | Attempts on target |                      | Passes Final Third |                     | Scoring Chances |                   |
|----------|-------------------|--------------------|----------------------|--------------------|---------------------|-----------------|-------------------|
| 1        | CRISTANTE ROM 2   | 1                  | E. FERGUSON ROM 2    | 1                  | CRISTANTE ROM 20    | 1               | PISILLI ROM 1     |
| 2        | E. FERGUSON ROM 2 | 2                  | DOVBYK ROM 1         | 2                  | DYBALA ROM 14       | 2               | DYBALA ROM 1      |
| 3        | ŠTULIĆ LEC 2      | 3                  | N'DRI LEC 1          | 3                  | DANILO VEIGA LEC 12 | 3               | PIEROTTI LEC 1    |
| 4        | DYBALA ROM 2      |                    |                      | 4                  | EL SHAARAWY ROM 11  |                 |                   |
| 5        | DOVBYK ROM 1      |                    |                      | 5                  | WESLEY ROM 11       |                 |                   |
| Crosses  |                   | Passes Completed   |                      | Key Passes         |                     | Dribbling       |                   |
| 1        | GALLO LEC 4       | 1                  | TIAGO GABRIEL LEC 48 | 1                  | DOVBYK ROM 1        | 1               | EL SHAARAWY ROM 2 |
| 2        | BANDA LEC 4       | 2                  | GALLO LEC 46         | 2                  | CRISTANTE ROM 1     | 2               | CRISTANTE ROM 1   |
| 3        | DYBALA ROM 3      | 3                  | ÇELIK ROM 46         | 3                  | DANILO VEIGA LEC 1  | 3               | BANDA LEC 1       |
| 4        | DOVBYK ROM 2      | 4                  | DANILO VEIGA LEC 42  | 4                  | N'DRI LEC 1         | 4               | M. KONÉ ROM 1     |
| 5        | CRISTANTE ROM 2   | 5                  | CRISTANTE ROM 41     | 5                  | M. KONÉ ROM 1       | 5               | SOULÉ ROM 1       |

Lecce 06/01/2026 ETTORE GIARDINIERO - VIA DEL MARE 18:00

LECCE

0-2

ROMA



## PLAYERS RANKING (ATHLETICS PERFORMANCE)

| Jog - Run - Sprint (km) |                               |              |       |
|-------------------------|-------------------------------|--------------|-------|
| 1                       | YOUSSEF MALEH                 | Total 11.002 |       |
|                         | 8.054                         | 2.608        | 0.255 |
| 2                       | KIALONDA GASPAR               | Total 10.679 |       |
|                         | 8.662                         | 1.785        | 0.172 |
| 3                       | ANTONINO GALLO                | Total 10.164 |       |
|                         | 7.673                         | 2.194        | 0.255 |
| 4                       | DANILO FILIPE DE MELO VEIGA   | Total 10.130 |       |
|                         | 8.043                         | 1.900        | 0.113 |
| 5                       | TIAGO GABRIEL COELHO OLIVEIRA | Total 9.411  |       |
|                         | 7.699                         | 1.563        | 0.074 |

| Jog - Run - Sprint (km) |                             |              |       |
|-------------------------|-----------------------------|--------------|-------|
| 1                       | BRYAN CRISTANTE             | Total 12.509 |       |
|                         | 9.634                       | 2.698        | 0.138 |
| 2                       | NICCOLÒ PISILLI             | Total 11.901 |       |
|                         | 8.630                       | 3.088        | 0.148 |
| 3                       | WESLEY VINÍCIUS FRANÇA LIMA | Total 10.883 |       |
|                         | 7.908                       | 2.497        | 0.423 |
| 4                       | MEHMET ZEKI ÇELIK           | Total 10.876 |       |
|                         | 8.386                       | 2.155        | 0.283 |
| 5                       | KOUADIO EMMANUEL BORIS KONE | Total 10.484 |       |
|                         | 8.065                       | 2.272        | 0.089 |

| AVG Speed km/h (run) |          |     |        |
|----------------------|----------|-----|--------|
| 1                    | ŠTULIĆ   | LEC | 19.720 |
| 2                    | N'DRI    | LEC | 19.662 |
| 3                    | SOTTIL   | LEC | 19.653 |
| 4                    | GALLO    | LEC | 19.650 |
| 5                    | PIEROTTI | LEC | 19.645 |

| AVG Speed km/h (run) |             |     |        |
|----------------------|-------------|-----|--------|
| 1                    | SOULÉ       | ROM | 19.715 |
| 2                    | EL SHAARAWY | ROM | 19.689 |
| 3                    | E. FERGUSON | ROM | 19.603 |
| 4                    | TSIMIKAS    | ROM | 19.528 |
| 5                    | GHILARDI    | ROM | 19.499 |

| AVG Speed km/h (sprint) |         |     |        |
|-------------------------|---------|-----|--------|
| 1                       | CAMARDA | LEC | 27.828 |
| 2                       | BANDA   | LEC | 27.741 |
| 3                       | GALLO   | LEC | 27.513 |
| 4                       | N'DRI   | LEC | 27.466 |
| 5                       | SOTTIL  | LEC | 27.415 |

| AVG Speed km/h (sprint) |             |     |        |
|-------------------------|-------------|-----|--------|
| 1                       | DOVBYK      | ROM | 28.404 |
| 2                       | ZIÓŁKOWSKI  | ROM | 28.241 |
| 3                       | WESLEY      | ROM | 28.177 |
| 4                       | ÇELIK       | ROM | 27.794 |
| 5                       | E. FERGUSON | ROM | 27.721 |

## TEAM STATS (ATHLETICS PERFORMANCE)

Distance Covered (km) 112.173

Distance Covered (km) 115.527

| Jog - Run - Sprint (km) |        |       |
|-------------------------|--------|-------|
| 87.465                  | 21.989 | 2.043 |

| Jog - Run - Sprint (km) |        |       |
|-------------------------|--------|-------|
| 89.320                  | 23.472 | 2.076 |

Fitness data displayed in the report are the ones collected in real time and could be different to the post-processed ones, delivered to the coaching staff

|               |                           |      |             |         |            |                     |                  |
|---------------|---------------------------|------|-------------|---------|------------|---------------------|------------------|
| Jog:          | 0-7 km/h                  | Run: | 7.1-15 km/h | Sprint: | 15.1+ km/h | Jog + Run + Sprint: | Distance covered |
| TOP Sprinter: | Top four players per team |      |             |         |            |                     |                  |

Lecce 06/01/2026 ETTORE GIARDINIERO - VIA DEL MARE 18:00



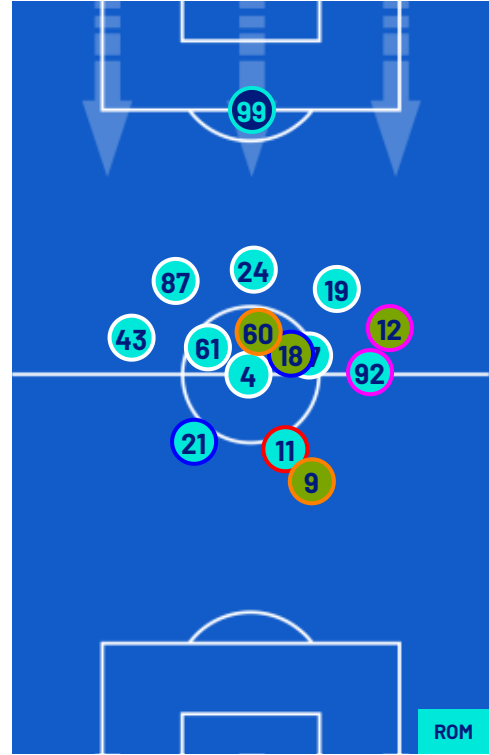
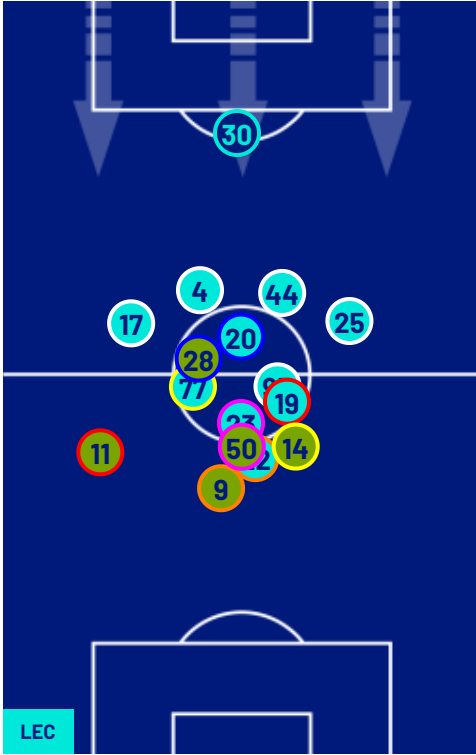
LECCE

0-2

ROMA



## PLAYERS AVERAGE POSITIONS



- Legend:
- |                  |           |            |                           |           |
|------------------|-----------|------------|---------------------------|-----------|
| 1st Substitution | Player In | Player Out | Player In Substitution Of | Player In |
| 2nd Substitution | Player In | Player Out | Player In Substitution Of | Player In |
| 3rd Substitution | Player In | Player Out | Player In Substitution Of | Player In |
| 4th Substitution | Player In | Player Out | Player In Substitution Of | Player In |
| 5th Substitution | Player In | Player Out | Player In Substitution Of | Player In |

Lecce 06/01/2026 ETTORE GIARDINIERO - VIA DEL MARE 18:00



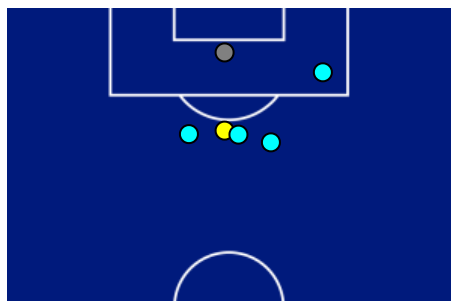
**LECCE**

**0-2**

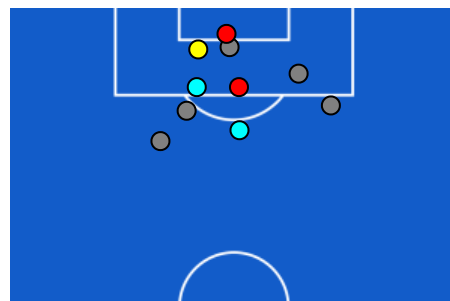
**ROMA**



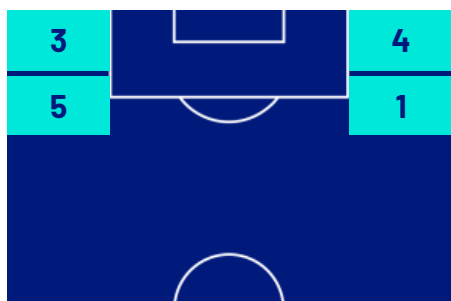
## ATTEMPTS MAP



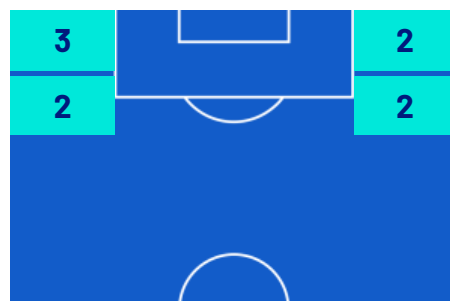
|   |            |   |
|---|------------|---|
| 0 | Goals      | 2 |
| 1 | On target  | 3 |
| 1 | Off target | 5 |
| 4 | Blocked    | 2 |



## OPEN PLAY CROSSES MAP



|    |                   |    |
|----|-------------------|----|
| 3  | Crosses completed | 2  |
| 18 | Total crosses     | 12 |
| 17 | Accuracy (%)      | 17 |



|     |                    |     |
|-----|--------------------|-----|
| 725 | Total Balls Played | 740 |
| 255 | DEFENSIVE          | 271 |
| 286 | MIDFIELD           | 261 |
| 184 | ATTACK ZONE        | 208 |

Lecce 06/01/2026 ETTORE GIARDINIERO - VIA DEL MARE 18:00

LECCE

0-2

ROMA



## KEY PLAYERS

|  |            |
|--|------------|
|  <b>KONAN IGNACE JOCELYN N'DRI</b> | 10         |
| Position   | Forward    |
| Date of birth  | 27/10/2000 |
| Nationality  | CIV        |

|  |            |
|--|------------|
|  <b>EVAN JOE FERGUSON</b> | 11         |
| Position   | Forward    |
| Date of birth  | 19/10/2004 |
| Nationality  | IRL        |

|                                |       |       |          |
|--------------------------------|-------|-------|----------|
| Jog 26% - Run 62% - Sprint 12% |       |       | Km 4.892 |
| 3.612                          | 1.066 | 0.177 |          |

|                                |       |       |          |
|--------------------------------|-------|-------|----------|
| Jog 45% - Run 43% - Sprint 12% |       |       | Km 6.932 |
| 5.391                          | 1.331 | 0.175 |          |

| Mvp Stats                      |      |
|--------------------------------|------|
| Minutes Played                 | 49   |
| Goals                          | 0    |
| Scoring Chances                | 0    |
| Attempts                       | 1    |
| Attempts on target             | 1(0) |
| Assists                        | 0    |
| Balls Played                   | 0    |
| Passes Completed               | 5    |
| Passes Completed/Attempted (%) | 71   |
| Key Passes                     | 1    |
| Gained Possessions             | 1    |
| Fouls Suffered                 | 0    |

| Mvp Stats                      |      |
|--------------------------------|------|
| Minutes Played                 | 61   |
| Goals                          | 1    |
| Scoring Chances                | 0    |
| Attempts                       | 2    |
| Attempts on target             | 2(1) |
| Assists                        | 0    |
| Balls Played                   | 0    |
| Passes Completed               | 10   |
| Passes Completed/Attempted (%) | 76   |
| Key Passes                     | 0    |
| Gained Possessions             | 2    |
| Fouls Suffered                 | 0    |

The above statistics are considered final 24 hours after the end of the match.

The disciplinary sanctions are unofficial, as they come from real-time tracking during the match. They will become official following approval by the relevant bodies.

In the case of uncertainty over the identity of a goalscorer, Lega Serie A will confirm this the day after each round of matches is completed.

The official data providers are Kama, Hawk-Eye, Math and Sport.