

MATCH REPORT



Matchday 36
SERIE A CHAMPIONSHIP 2025-2026



PARMA



ROMA

Parma 10/05/2026
ENNIO TARDINI 18:00

Parma 10/05/2026 ENNIO TARDINI 18:00



PARMA

2-3

ROMA



LINE-UPS

PARMA

31	SUZUKI (GK)	
39	CIRCATI	
37	TROILO	
5	VALENTI	
15	DELPRATO	
24	ORDOÑEZ	
16	KEITA	
41	NICOLUSSI C.	
14	VALERI	
7	STREFEZZA	
23	ELPHEGE	



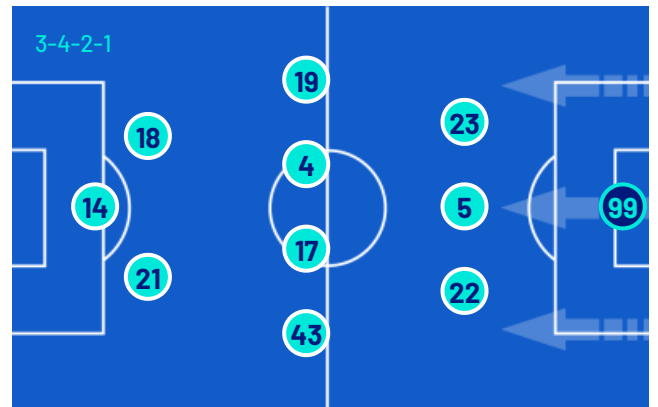
Bench

40	CORVI (GK)	
66	RINALDI (GK)	
3	NDIAYE	
8	ESTÉVEZ	
9	PELLEGRINO	
11	ALMQVIST	
17	ONDREJKA	
22	SØRENSEN	
27	BRITSCHGI	
29	F. CARBONI	
61	DROBNIC	
76	MIKOLAJEWSKI	

Head Coach: **CARLOS GARCIA CUESTA**

ROMA

(GK)	SVILAR	99
	MANCINI	23
	NDICKA	5
	HERMOSO	22
	ÇELIK	19
	CRISTANTE	4
	M. KONÉ	17
	WESLEY	43
	SOULÉ	18
	DYBALA	21
	MALEN	14



Bench

(GK)	DE MARZI	70
(GK)	GOLLINI	95
	RENSCH	2
	ANGELIÑO	3
	EL AYNAOUI	8
	TSIMIKAS	12
	VENTURINO	20
	ZIÓŁKOWSKI	24
	PISILLI	61
	VAZ	78
	GHILARDI	87

Head Coach: **GIAN PIERO GASPERINI**

Referee: **DANIELE CHIFFI**
 Assistent referee: **KALED BAHRI**
 Assistent referee: **VALERIO VECCHI**

Fourth official: **FABIO MARESCA**
 V.A.R.: **PAOLO MAZZOLENI**
 A.V.A.R.: **GIACOMO PAGANESSI**

Parma 10/05/2026 ENNIO TARDINI 18:00



PARMA

2-3

ROMA



MATCH EVENTS

PAR	ROM
1H 0'	
45+1'	2H 46'
90+14'	
PARMA ROMA	
2	3
<p>G. STREFEZZA 47' </p> <p>(HANS NICOLUSSI CAVIGLIA) 47' </p> <p>G. STREFEZZA 48'</p> <p>MATEO PELLEGRINO G. STREFEZZA 53' </p> <p>MARIANO TROILO 65' </p> <p>SASCHA BRITSCHGI ENRICO DELPRATO 74' </p> <p>FRANCO CARBONI EMANUELE VALERI 74' </p> <p>SASCHA BRITSCHGI 76' </p> <p>NAHUEL ESTÉVEZ HANS NICOLUSSI CAVIGLIA 79' </p> <p>PONTUS ALMQVIST NESTA ELPHEGE 79' </p> <p>MANDELA KEITA 87' </p> <p>(NAHUEL ESTÉVEZ) 87' </p> <p>SASCHA BRITSCHGI 90+9' </p>	<p> 22' DONYELL MALEN</p> <p> 22' (PAULO DYBALA)</p> <p> 53' DANIELE GHILARDI MARIO HERMOSO</p> <p> 59' NEIL EL AYNAOUI BRYAN CRISTANTE</p> <p> 59' NICCOLÒ PISILLI MATÍAS SOULÉ</p> <p> 74' DEVYNE RENSCH ZEKI ÇELIK</p> <p> 74' LORENZO VENTURINO MANU KONÉ</p> <p> 90+4' DEVYNE RENSCH</p> <p> 90+11' DONYELL MALEN</p>

Legend:

- Goals
- Own goal
- Penalty
- Assist
- Yellow Card
- Substitution
- Red Card
- Double Yellow Card

Parma 10/05/2026 ENNIO TARDINI 18:00



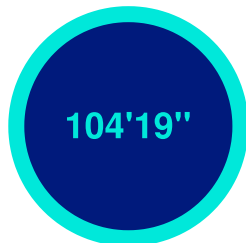
PARMA

2-3

ROMA



GAME TIME



Effective
played time:
53%

1st Half - 2nd Half
29'56" - 25'16"



BALL POSSESSION

PARMA

ROMA

QUARTERS BALL POSSESSION

1H	0'-15'	2H	46'-60'
27.01%	72.99%	32.09%	67.91%
	16'-30'		61'-75'
28.65%	71.35%	45.45%	54.55%
	31'-46'		76'-104'
49.4%	50.6%	24.16%	75.84%

TEAM STATS

	PAR	ROM
Attempts	11	15
Attempts on target	3	7
Attempts on target from penalty box	6	12
Post		1
Bar		
Attempts off target	5	4
Blocked Shots	3	3
Scoring Chances	1	4
Key Passes	7	10
Assists	2	1
Fouls Committed	14	8
Corners	3	6
Offsides	4	4
Cross Completed/Total	5/17	7/31
Dribbling	6	6
Passes Completed	240	526
Passes Completed/Attempted (%)	79	89
Passes Final Third	59	234
Balls played forward	96	343
Long Passes	34	42
Saves	4	1
Gained Possessions	38	34

Parma 10/05/2026 ENNIO TARDINI 18:00



PARMA

2-3

ROMA



PLAYER STATS

PARMA		M	GC	OG	S	AS	CL	LB	FYC	SYC	RC								
31	SUZUKI	105'	3		4			27											
PARMA		M	G	OG	A	AT	HW	SC	FS	BP	AS	KP	P	P(%)	PA	R	FYC	SYC	RC
39	CIRCATI	105'							49				30	81	12	5			
37	TROILO	105'							45				23	85	5	3	1		
5	VALENTI	105'						1	49				24	82	8	6			
15	DELPRATO	75'							31				16	88	10	4			
24	ORDOÑEZ	105'			1			2	27		2		18	90	12	1			
16	KEITA	105'	1		1	1			52				29	82	11	6			
41	NICOLUSSI C.	80'			2			1	53	1	1		26	83	10	5			
14	VALERI	75'						1	42		2		16	76	6	1			
7	STREFEZZA	54'	1		5	2	1	2	24				9	81	4	3	1		
23	ELPHEGE	80'			1				20		1		10	76	7	2			
8	ESTÉVEZ	26'							8	1	1		3	100	2				
9	PELLEGRINO	52'			1				16				9	90	6	1			
11	ALMOVIST	26'						1	4				3	100	2				
27	BRITSCHGI	25'							6				1	50				1	1
29	F. CARBONI	30'							9				1	50	1				
ROMA		M	GC	OG	S	AS	CL	LB	FYC	SYC	RC								
99	SVILAR	105'	2		1		1	14											
ROMA		M	G	OG	A	AT	HW	SC	FS	BP	AS	KP	P	P(%)	PA	R	FYC	SYC	RC
23	MANCINI	105'			1				58				41	89	23	3			
5	NDICKA	105'			1	1			52				37	94	11	2			
22	HERMOSO	54'							67				55	93	30	4			
19	ÇELIK	75'						1	61		1		38	88	33	3			
4	CRISTANTE	60'							60				42	84	28	5			
17	M. KONÉ	75'						2	68				52	86	39	3			
43	WESLEY	105'			1	1		1	78		2		51	91	38	3			
18	SOULÉ	60'			2		1	1	39				29	93	27				
21	DYBALA	105'						3	83	1	6		60	86	52	3			
14	MALEN	105'	2		5	4		3	2	29			11	84	10	2			
2	RENSCH	30'	1		1	1			16				10	83	7				
8	EL AYNAOUI	46'			1				37		1		27	96	16	3			
20	VENTURINO	30'							12				5	71	5				
61	PISILLI	46'			2				26				18	85	12				
87	GHILARDI	52'			1			1	34				26	96	12	3			

Legend

FYC	Yellow Card
OG	Owngoal
BP	Balls Played
SYC	Double Yellow Card
RC	Red Card
G	Goals
GC	Goal Conceded
M	Minutes Played
AS	Assists
FS	Fouls Suffered
A	Attempts
AT	Attempts on target
SC	Scoring Chances
HW	Hit Woodwork
S	Saves
CL	Clearences
LB	Long Ball
P(%)	Passes Completed/Attempted (%)
KP	Key Passes
PA	Balls played forward
P	Passes Completed
R	Gained Possessions

PLAYERS RANKING

Attempts		Attempts on target		Passes Final Third		Scoring Chances	
1	MALEN ROM 5	1	MALEN ROM 4	1	DYBALA ROM 43	1	MALEN ROM 3
2	STREFEZZA PAR 5	2	STREFEZZA PAR 2	2	WESLEY ROM 35	2	STREFEZZA PAR 1
3	NICOLUSSI C. PAR 2	3	RENSCH ROM 1	3	ÇELIK ROM 27	3	SOULÉ ROM 1
4	SOULÉ ROM 2	4	NDICKA ROM 1	4	M. KONÉ ROM 25		
5	PISILLI ROM 2	5	KEITA PAR 1	5	SOULÉ ROM 21		
Crosses		Passes Completed		Key Passes		Dribbling	
1	VALERI PAR 10	1	DYBALA ROM 60	1	DYBALA ROM 6	1	NICOLUSSI C. PAR 3
2	DYBALA ROM 9	2	HERMOSO ROM 55	2	ORDOÑEZ PAR 2	2	MALEN ROM 2
3	WESLEY ROM 9	3	M. KONÉ ROM 52	3	VALERI PAR 2	3	CRISTANTE ROM 1
4	VENTURINO ROM 4	4	WESLEY ROM 51	4	WESLEY ROM 2	4	VALERI PAR 1
5	DELPRATO PAR 3	5	CRISTANTE ROM 42	5	NICOLUSSI C. PAR 1	5	MANCINI ROM 1

Parma 10/05/2026 ENNIO TARDINI 18:00



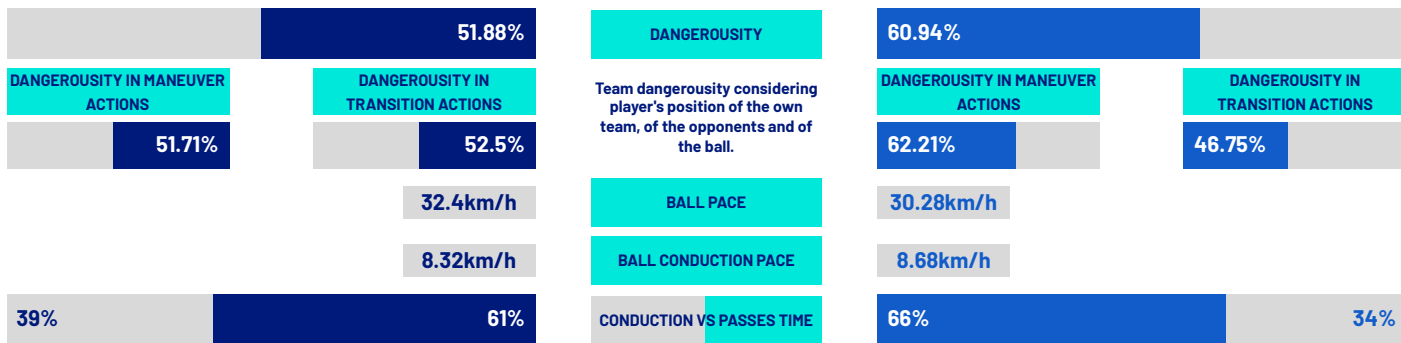
PARMA

2-3

ROMA



TEAM INDICATORS



RECORDMEN

PASS GAIN

Number of players overtaken by a vertical pass (only successful passes are considered).

It shows how much a player tends to overcome the opponent's pressure lines.

1	31	ZION SUZUKI	4.83	1	99	MILE SVILAR	5.17
2	14	EMANUELE VALERI	4	2	14	DONYELL MALEN	4.86
3	5	LAUTARO VALENTI	3.43	3	22	MARIO HERMOSO	3
4	8	NAHUEL ESTÉVEZ	3.4	4	20	LORENZO VENTURINO	3
5	29	FRANCO CARBONI	3.33	5	19	ZEKI ÇELIK	2.81

PASS RISK

Measures the player's propensity to risk the pass (only successful passes are considered).

1	8	NAHUEL ESTÉVEZ	66.67%	1	43	WESLEY FRANÇA	30.3%
2	29	FRANCO CARBONI	53%	2	14	DONYELL MALEN	30.13%
3	9	MATEO PELLEGRINO	50.75%	3	99	MILE SVILAR	28.62%
4	7	G. STREFEZZA	43%	4	21	PAULO DYBALA	26.67%
5	31	ZION SUZUKI	40.5%	5	20	LORENZO VENTURINO	24.33%

RECEIVED PRESSURE

How much the player with the ball is pressed by the opposite team.

It depends on the speed, running direction and distance from the opponent who is at a shorter distance.

1	9	MATEO PELLEGRINO	70.11%	1	14	DONYELL MALEN	72.7%
2	11	PONTUS ALMÖVIST	68.49%	2	61	NICCOLÒ PISILLI	63.17%
3	23	NESTA ELPHEGE	66.67%	3	21	PAULO DYBALA	60.1%
4	7	G. STREFEZZA	63.24%	4	17	MANU KONÉ	60.06%
5	24	CHRISTIAN ORDÓÑEZ	58.67%	5	18	MATÍAS SOULÉ	59.19%

PASS AVAILABILITY

Ability of a player to get away from opponents to receive the ball.

It is computed for all the teammates of the player in possession.

1	29	FRANCO CARBONI	83.19%	1	2	DEVYNE RENSCH	88.14%
2	5	LAUTARO VALENTI	78.49%	2	19	ZEKI ÇELIK	80.45%
3	14	EMANUELE VALERI	77.99%	3	43	WESLEY FRANÇA	78.1%
4	15	ENRICO DELPRATO	71.73%	4	22	MARIO HERMOSO	77.41%
5	16	MANDELA KEITA	70.56%	5	20	LORENZO VENTURINO	75.79%

Parma 10/05/2026 ENNIO TARDINI 18:00



PARMA

2-3

ROMA



PLAYERS RANKING (ATHLETICS PERFORMANCE)

Jog - Run - Sprint (km)			
1	CHRISTIAN NAHUEL ORDONEZ	Total 10.321	
	7.647	2.458	0.158
2	HANS NICOLUSSI CAVIGLIA	Total 10.224	
	8.021	2.087	0.084
3	LAMINE MANDELA KEITA	Total 9.387	
	7.658	1.542	0.111
4	LAUTARO RODRIGO VALENTI	Total 9.370	
	7.705	1.448	0.155
5	ALESSANDRO CIRCATI	Total 9.162	
	7.647	1.343	0.113

AVG Speed km/h (run)			
1	VALERI	PAR	19.705
2	ALMQVIST	PAR	19.704
3	ORDOÑEZ	PAR	19.681
4	ELPHEGE	PAR	19.635
5	STREFEZZA	PAR	19.534

AVG Speed km/h (sprint)			
1	VALERI	PAR	28.636
2	PELLEGRINO	PAR	28.458
3	TROILO	PAR	28.051
4	ELPHEGE	PAR	27.732
5	DELPRATO	PAR	27.269

Jog - Run - Sprint (km)			
1	GIANLUCA MANCINI	Total 9.499	
	7.507	1.739	0.189
2	WESLEY VINÍCIUS FRANÇA LIMA	Total 9.477	
	7.044	1.970	0.404
3	PAULO EXEQUIEL DYBALA	Total 9.300	
	7.504	1.691	0.034
4	OBITE EVAN NDICKA	Total 8.990	
	7.538	1.180	0.210
5	KOUADIO EMMANUEL BORIS KONE	Total 8.584	
	6.636	1.866	0.033

AVG Speed km/h (run)			
1	MANCINI	ROM	19.742
2	ÇELIK	ROM	19.645
3	GHILARDI	ROM	19.602
4	MALEN	ROM	19.601
5	SOULÉ	ROM	19.586

AVG Speed km/h (sprint)			
1	RENSCH	ROM	29.082
2	ÇELIK	ROM	28.047
3	EL AYNAOUI	ROM	27.655
4	NDICKA	ROM	27.471
5	WESLEY	ROM	27.439

TEAM STATS (ATHLETICS PERFORMANCE)

Distance Covered (km) 102.687

Distance Covered (km) 100.524

Jog - Run - Sprint (km)		
82.878	16.907	2.094

Jog - Run - Sprint (km)		
79.035	18.552	2.115

Fitness data displayed in the report are the ones collected in real time and could be different to the post-processed ones, delivered to the coaching staff

Jog:	0-7 km/h	Run:	7.1-15 km/h	Sprint:	15.1+ km/h	Jog + Run + Sprint:	Distance covered
TOP Sprinter:	Top five players per team						

Parma 10/05/2026 ENNIO TARDINI 18:00



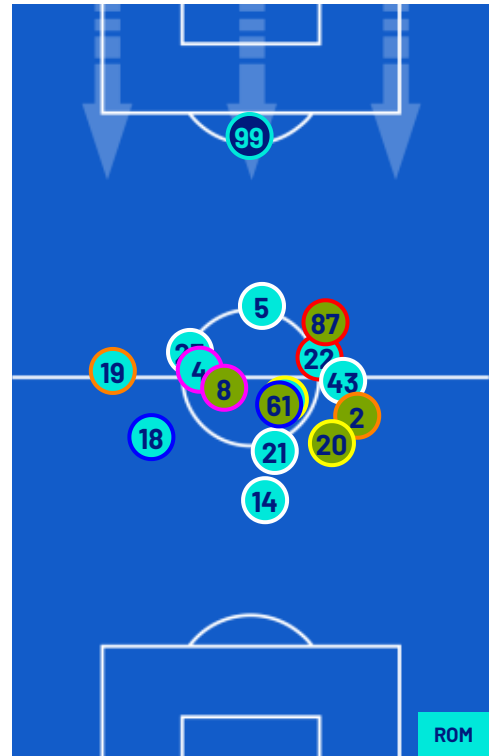
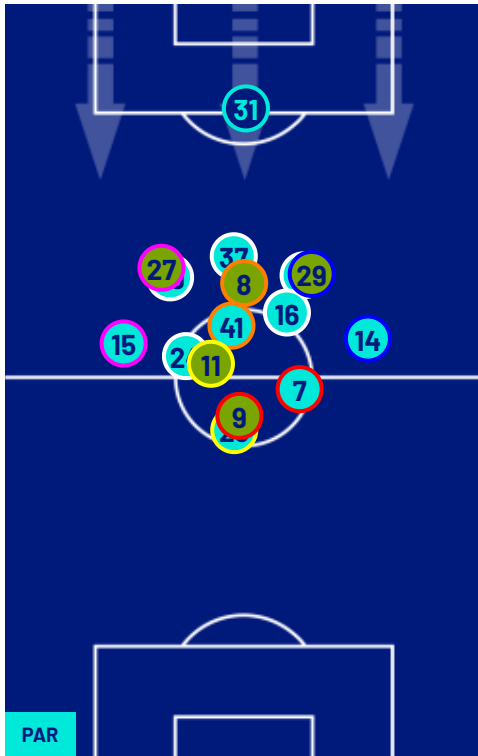
PARMA

2-3

ROMA



PLAYERS AVERAGE POSITIONS



- Legend:
- | | | | | |
|------------------|-----------|------------|---------------------------|--|
| 1st Substitution | Player In | Player Out | Player In Substitution Of | |
| 2nd Substitution | Player In | Player Out | Player In Substitution Of | |
| 3rd Substitution | Player In | Player Out | Player In Substitution Of | |
| 4th Substitution | Player In | Player Out | Player In Substitution Of | |
| 5th Substitution | Player In | Player Out | | |

Parma 10/05/2026 ENNIO TARDINI 18:00



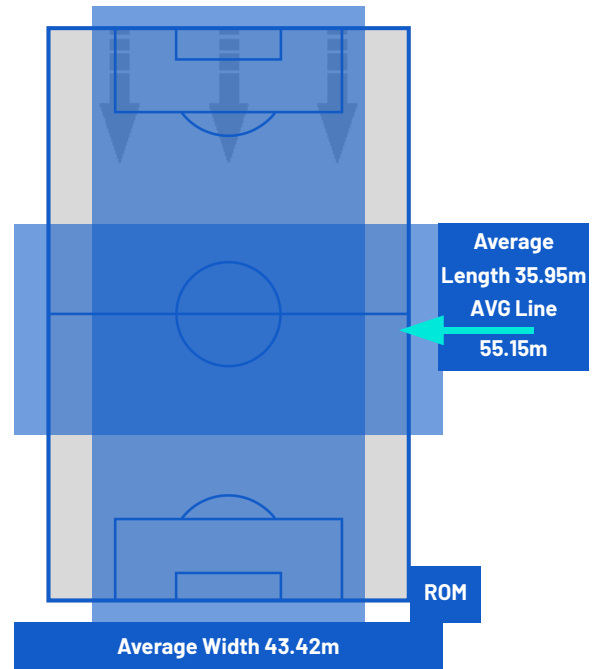
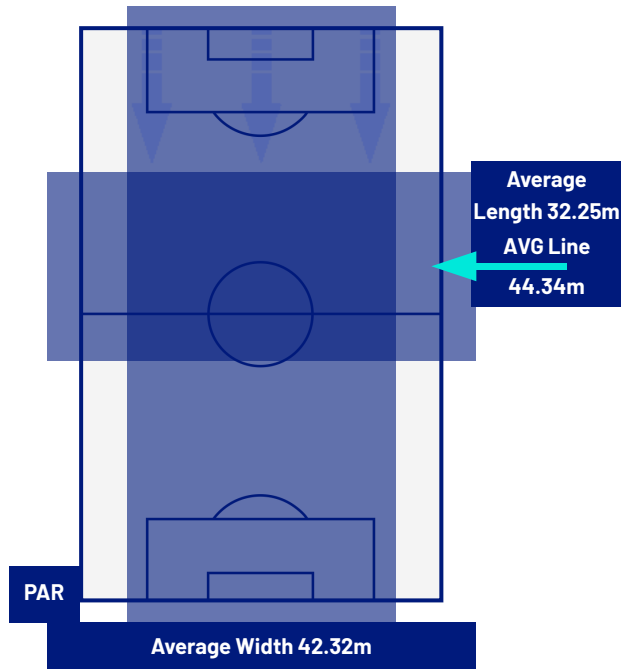
PARMA

2-3

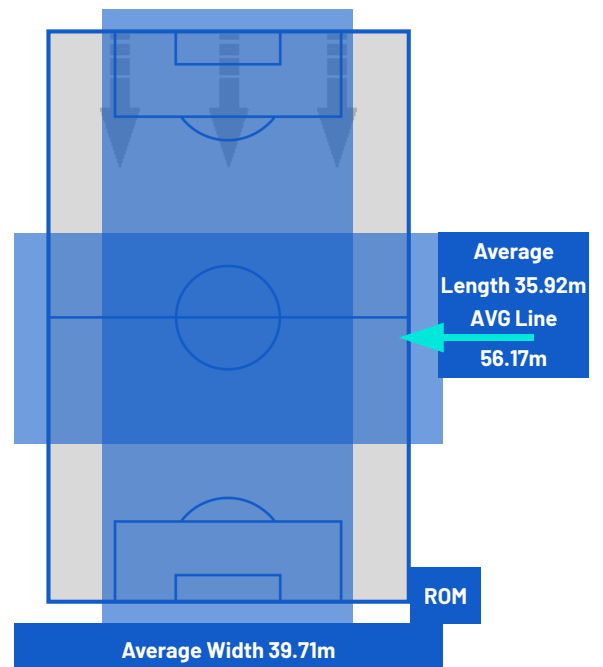
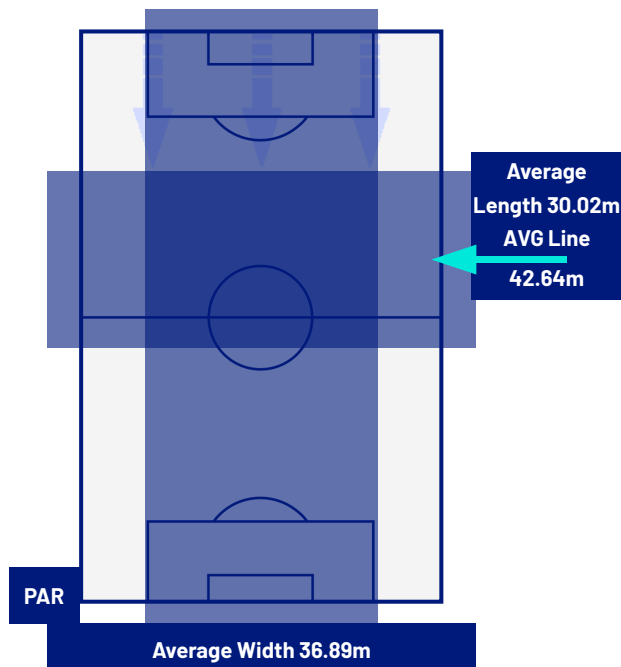
ROMA



TEAM'S DEFENSE POSITION 1ST HALF



TEAM'S DEFENSE POSITION 2ND HALF



Parma 10/05/2026 ENNIO TARDINI 18:00



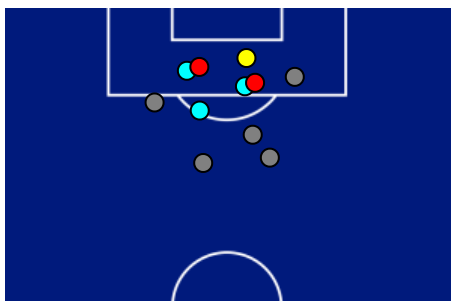
PARMA

2-3

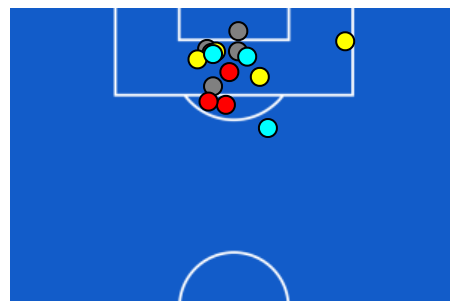
ROMA



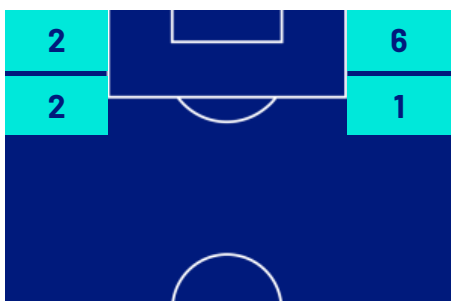
ATTEMPTS MAP



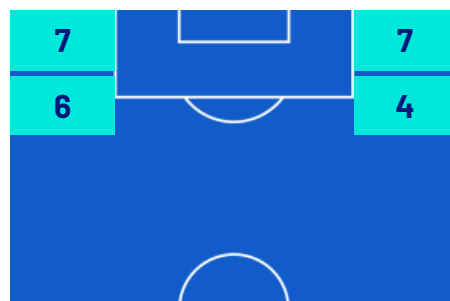
2	Goals	3
3	On target	7
5	Off target	4
3	Blocked	3



OPEN PLAY CROSSES MAP



5	Crosses completed	7
17	Total crosses	31
29	Accuracy (%)	23



561	Total Balls Played	822
260	DEFENSIVE	166
162	MIDFIELD	292
139	ATTACK ZONE	364

Parma 10/05/2026 ENNIO TARDINI 18:00



PARMA

2-3

ROMA



KEY PLAYERS

 LAMINE MANDELA KEITA	16
Position	Midfielder
Date of birth	10/05/2002
Nationality	BEL

 DONYELL MALEN	14
Position	Forward
Date of birth	19/01/1999
Nationality	NED

Jog 82% - Run 17% - Sprint 1%			Km 9.387
7.658	1.542	0.111	

Jog 82% - Run 17% - Sprint 1%			Km 7.888
6.405	1.319	0.079	

Mvp Stats	
Minutes Played	105
Goals	1
Scoring Chances	0
Attempts	1
Attempts on target	1(1)
Assists	0
Balls Played	52
Passes Completed	29
Passes Completed/Attempted (%)	82
Key Passes	0
Gained Possessions	6
Fouls Suffered	0

Mvp Stats	
Minutes Played	105
Goals	2
Scoring Chances	3
Attempts	5
Attempts on target	4(2)
Assists	0
Balls Played	29
Passes Completed	11
Passes Completed/Attempted (%)	84
Key Passes	0
Gained Possessions	2
Fouls Suffered	2

The above statistics are considered final 24 hours after the end of the match.

The disciplinary sanctions are unofficial, as they come from real-time tracking during the match. They will become official following approval by the relevant bodies.

In the case of uncertainty over the identity of a goalscorer, Lega Serie A will confirm this the day after each round of matches is completed.

The official data providers are Kama, Hawk-Eye, Math and Sport.