

MATCH REPORT



Matchday 31
SERIE A CHAMPIONSHIP 2025-2026



LECCE



ATALANTA

Lecce 06/04/2026
ETTORE GIARDINIERO - VIA DEL MARE 15:00

Lecce 06/04/2026 ETTORE GIARDINIERO - VIA DEL MARE 15:00

LECCE

0-3

ATALANTA



LINE-UPS

LECCE

| | |
|----|---------------|
| 30 | FALCONE (GK) |
| 17 | DANILO VEIGA |
| 5 | SIEBERT |
| 44 | TIAGO GABRIEL |
| 3 | NDABA |
| 20 | RAMADANI |
| 79 | NGOM |
| 50 | PIEROTTI |
| 8 | S. FOFANA |
| 19 | BANDA |
| 99 | CHEDDIRA |



Bench

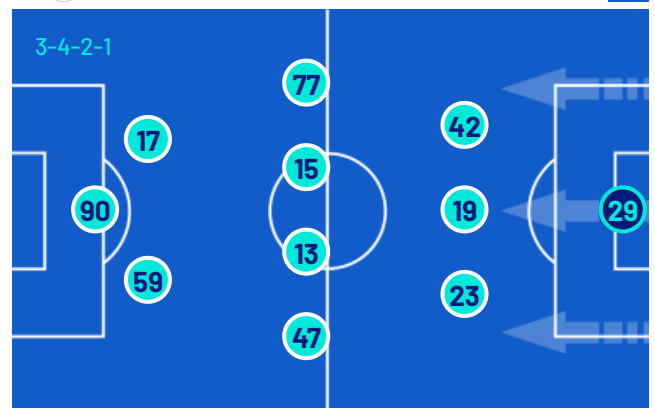
| | |
|----|--------------|
| 1 | FRÜCHTL (GK) |
| 32 | SAMOOJA (GK) |
| 6 | ÁLEX SALA |
| 9 | ŠTULIĆ |
| 11 | N'DRI |
| 13 | MATÍAS PÉREZ |
| 14 | HELGASON |
| 16 | GANDELMAN |
| 18 | JEAN |
| 28 | GORTER |
| 29 | L. COULIBALY |
| 36 | MARCHWIŃSKI |

Head Coach: **EUSEBIO LUCA DI FRANCESCO**

Referee: **FEDERICO LA PENNA**
 Assistant referee: **DOMENICO FONTEMURATO**
 Assistant referee: **CLAUDIO BARONE**

ATALANTA

| | | |
|------|--------------|----|
| (GK) | CARNESECCHI | 29 |
| | SCALVINI | 42 |
| | DJIMSITI | 19 |
| | KOLAŠINAC | 23 |
| | ZAPPACOSTA | 77 |
| | DE ROON | 15 |
| | ÉDERSON | 13 |
| | BERNASCONI | 47 |
| x2 | DE KETELAERE | 17 |
| | ZALEWSKI | 59 |
| | KRSTOVIĆ | 90 |



Bench

| | | |
|------|-------------|----|
| (GK) | PARDEL | 50 |
| (GK) | SPORTIELLO | 57 |
| | KOSSOUNOU | 3 |
| | BAKKER | 5 |
| | MUSAH | 6 |
| | K. SULEMANA | 7 |
| | PAŠALIĆ | 8 |
| | SAMARDŽIĆ | 10 |
| | BELLANOVA | 16 |
| | RASPADORI | 18 |
| | NAVARRO | 49 |
| | AHANOR | 69 |

Head Coach: **RAFFAELE PALLADINO**

Fourth official: **ANTONIO RAPUANO**
 V.A.R.: **VALERIO MARINI**
 A.V.A.R.: **LORENZO MAGGIONI**

Lecce 06/04/2026 ETTORE GIARDINIERO - VIA DEL MARE 15:00



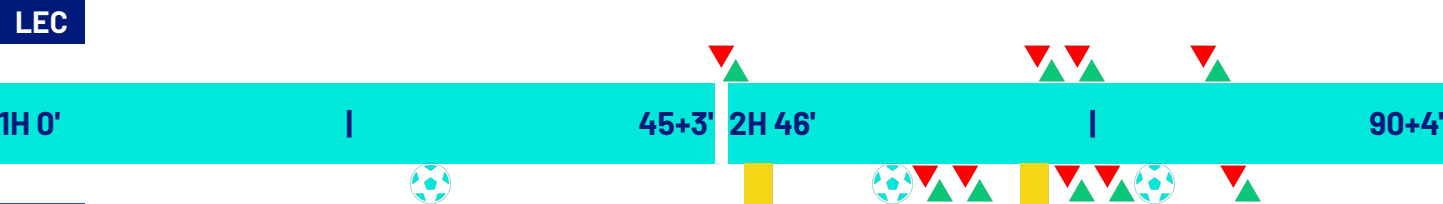
LECCE

0-3

ATALANTA



MATCH EVENTS



| LECCE | ATALANTA |
|-------|----------|
|-------|----------|

0

3

OMRI GANDELMAN | SADIK FOFANA 45'

LASSANA COULIBALY | YLBER RAMADANI 68'

KONAN N'DRI | DANILO VEIGA 68'

NIKOLA ŠTULIĆ | WALID CHEDDIRA 78'

- 29' GOAL: GIORGIO SCALVINI (CHARLES DE KETELAERE)
- 47' YELLOW CARD: BERAT DJIMSITI
- 59' GOAL: NIKOLA KRSTOVIĆ (CHARLES DE KETELAERE)
- 63' GOAL: GIACOMO RASPADORI | NICOLA ZALEWSKI
- 63' GOAL: MARIO PAŠALIĆ | MARTEN DE ROON
- 70' YELLOW CARD: DAVIDE ZAPPACOSTA
- 70' GOAL: ODILON KOSSOUNOU | BERAT DJIMSITI
- 70' GOAL: RAOUL BELLANOVA | DAVIDE ZAPPACOSTA
- 73' GOAL: GIACOMO RASPADORI (MARIO PAŠALIĆ)
- 80' GOAL: KAMALDEEN SULEMANA | NIKOLA KRSTOVIĆ

Legend:

- Goals
- Owngoal
- Penalty
- Assist
- Yellow Card
- Substitution
- Red Card
- Double Yellow Card



Matchday 31
SERIE A CHAMPIONSHIP 2025-2026

MATCH REPORT

Lecce 06/04/2026 ETTORE GIARDINIERO - VIA DEL MARE 15:00



LECCE

0-3

ATALANTA

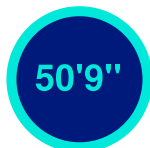


GAME TIME



Effective
played time:
53%

1st Half - 2nd Half
26'35" - 23'34"



BALL POSSESSION

LECCE

ATALANTA

QUARTERS BALL POSSESSION

| 1H | 0'-15' | 2H | 46'-60' |
|--------|--------|--------|---------|
| 49.38% | 50.63% | 36.88% | 63.12% |
| 32.12% | 67.88% | 40.14% | 59.86% |
| 36.2% | 63.8% | 59.78% | 40.22% |

TEAM STATS

| | LEC | ATA |
|-------------------------------------|------|------|
| Attempts | 11 | 16 |
| Attempts on target | | 6 |
| Attempts on target from penalty box | 5 | 13 |
| Post | | |
| Bar | | |
| Attempts off target | 4 | 6 |
| Blocked Shots | 6 | 4 |
| Scoring Chances | | 2 |
| Key Passes | 7 | 14 |
| Assists | | 3 |
| Fouls Committed | 10 | 18 |
| Corners | 2 | 5 |
| Offsides | 2 | 5 |
| Cross Completed/Total | 5/25 | 5/15 |
| Dribbling | 10 | 10 |
| Passes Completed | 292 | 415 |
| Passes Completed/Attempted (%) | 82 | 84 |
| Passes Final Third | 79 | 76 |
| Balls played forward | 149 | 151 |
| Long Passes | 34 | 36 |
| Saves | 3 | |
| Gained Possessions | 35 | 46 |

Lecce 06/04/2026 ETTORE GIARDINIERO - VIA DEL MARE 15:00

LECCE

0-3

ATALANTA



PLAYER STATS

| LECCE | | M | GC | OG | S | AS | CL | LB | FYC | SYC | RC |
|-------|---------------|-----|----|----|---|----|----|----|-----|-----|----|
| 30 | FALCONE | 96' | 3 | | 3 | | 1 | 26 | | | |
| 17 | DANILO VEIGA | 70' | | | | | | 1 | 51 | | |
| 5 | SIEBERT | 96' | | 2 | | | | 1 | 47 | | |
| 44 | TIAGO GABRIEL | 96' | | | | | | 2 | 43 | | |
| 3 | NDABA | 96' | | | | | | | 60 | | |
| 20 | RAMADANI | 70' | | | 1 | | | 2 | 40 | 1 | |
| 79 | NGOM | 96' | | | 1 | | | | 47 | 1 | |
| 50 | PIEROTTI | 96' | | | 2 | | | 2 | 48 | | |
| 8 | S. FOFANA | 48' | | | 1 | | | 1 | 20 | | |
| 19 | BANDA | 96' | | | 3 | | | 2 | 44 | 3 | |
| 99 | CHEDDIRA | 80' | | | | | | 2 | 27 | 2 | |
| 9 | ŠTULIĆ | 16' | | | | | | 1 | 4 | | |
| 11 | N'DRI | 27' | | | | | | 1 | 13 | | |
| 16 | GANDELMAN | 49' | | | 1 | | | 1 | 21 | | |
| 29 | L. COULIBALY | 27' | | | | | | | 23 | | |

| ATALANTA | | M | GC | OG | S | AS | CL | LB | FYC | SYC | RC |
|----------|--------------|-----|----|----|---|----|----|----|-----|-----|----|
| 29 | CARNESECCHI | 96' | | | | | | 16 | | | |
| 42 | SCALVINI | 96' | 1 | | 1 | 1 | | | 66 | | |
| 19 | DJIMSITI | 72' | | | | | | 1 | 52 | | |
| 23 | KOLAŠINAC | 96' | | | | | | 1 | 72 | | |
| 77 | ZAPPACOSTA | 72' | | | | | | 1 | 38 | 2 | |
| 15 | DE ROON | 65' | | | | | | | 51 | | |
| 13 | ÉDERSON | 96' | | | 3 | 1 | | | 64 | 1 | |
| 47 | BERNASCONI | 96' | | | | | | 1 | 72 | 1 | |
| 17 | DE KETELAERE | 96' | | | 2 | 1 | | | 59 | 2 | |
| 59 | ZALEWSKI | 65' | | | | | | 4 | 37 | 1 | |
| 90 | KRSTOVIĆ | 82' | 1 | | 6 | 2 | | 2 | 44 | 1 | |
| 3 | KOSSOUNOU | 24' | | | | | | | 2 | | |
| 7 | K. SULEMANA | 14' | | | 1 | | | | 8 | | |
| 8 | PAŠALIĆ | 31' | | | | | | 1 | 17 | 1 | |
| 16 | BELLANOVA | 24' | | | | | | | 16 | | |
| 18 | RASPADORI | 31' | 1 | | 3 | 1 | | | 18 | 1 | |

Legend

| | |
|------|--------------------------------|
| FYC | Yellow Card |
| OG | Owngoal |
| BP | Balls Played |
| SYC | Double Yellow Card |
| RC | Red Card |
| G | Goals |
| GC | Goal Conceded |
| M | Minutes Played |
| AS | Assists |
| FS | Fouls Suffered |
| A | Attempts |
| AT | Attempts on target |
| SC | Scoring Chances |
| HW | Hit Woodwork |
| S | Saves |
| CL | Clearences |
| LB | Long Ball |
| P(%) | Passes Completed/Attempted (%) |
| KP | Key Passes |
| PA | Balls played forward |
| P | Passes Completed |
| R | Gained Possessions |

PLAYERS RANKING

| Attempts | | Attempts on target | | Passes Final Third | | Scoring Chances | | | | | | | | | |
|----------|--------------|--------------------|----|--------------------|--------------|-----------------|----|---|--------------|-----|----|---|--------------|-----|---|
| 1 | KRSTOVIĆ | ATA | 6 | 1 | KRSTOVIĆ | ATA | 2 | 1 | KRSTOVIĆ | ATA | 2 | | | | |
| 2 | RASPADORI | ATA | 3 | 2 | DE KETELAERE | ATA | 1 | 2 | ZALEWSKI | ATA | 12 | | | | |
| 3 | BANDA | LEC | 3 | 3 | RASPADORI | ATA | 1 | 3 | KRSTOVIĆ | ATA | 12 | | | | |
| 4 | ÉDERSON | ATA | 3 | 4 | SCALVINI | ATA | 1 | 4 | DANILO VEIGA | LEC | 11 | | | | |
| 5 | DE KETELAERE | ATA | 2 | 5 | ÉDERSON | ATA | 1 | 5 | BANDA | LEC | 11 | | | | |
| Crosses | | Passes Completed | | Key Passes | | Dribbling | | | | | | | | | |
| 1 | BANDA | LEC | 11 | 1 | SCALVINI | ATA | 49 | 1 | DE KETELAERE | ATA | 4 | 1 | BANDA | LEC | 4 |
| 2 | BERNASCONI | ATA | 7 | 2 | BERNASCONI | ATA | 46 | 2 | BANDA | LEC | 3 | 2 | DE KETELAERE | ATA | 3 |
| 3 | N'DRI | LEC | 4 | 3 | DE KETELAERE | ATA | 44 | 3 | PAŠALIĆ | ATA | 3 | 3 | NDABA | LEC | 2 |
| 4 | ZAPPACOSTA | ATA | 3 | 4 | ÉDERSON | ATA | 44 | 4 | ZAPPACOSTA | ATA | 2 | 4 | ZAPPACOSTA | ATA | 1 |
| 5 | RAMADANI | LEC | 3 | 5 | KOLAŠINAC | ATA | 42 | 5 | CHEDDIRA | LEC | 2 | 5 | SCALVINI | ATA | 1 |

Lecce 06/04/2026 ETTORE GIARDINIERO - VIA DEL MARE 15:00

LECCE

0-3

ATALANTA



COACH

TEAM INDICATORS

| | | | | | |
|----------------------------------|------------------------------------|--|--|----------------------------------|------------------------------------|
| 56.31% | | DANGEROUSITY | | 51.43% | |
| DANGEROUSITY IN MANEUVER ACTIONS | DANGEROUSITY IN TRANSITION ACTIONS | Team dangerousity considering player's position of the own team, of the opponents and of the ball. | | DANGEROUSITY IN MANEUVER ACTIONS | DANGEROUSITY IN TRANSITION ACTIONS |
| 57.01% | 52.85% | | | 51.75% | 50% |
| 29.12km/h | | BALL PACE | | 28.58km/h | |
| 9.07km/h | | BALL CONDUCTION PACE | | 9.79km/h | |
| 42% | | CONDUCTION VS PASSES TIME | | 58% | |
| 58% | | | | 42% | |

RECORDMEN

PASS GAIN

Number of players overtaken by a vertical pass (only successful passes are considered).

It shows how much a player tends to overcome the opponent's pressure lines.

| | | | | | | | |
|---|----|-------------------|------|---|----|--------------------|------|
| 1 | 30 | WLADIMIRO FALCONE | 5.31 | 1 | 77 | DAVIDE ZAPPACOSTA | 3.67 |
| 2 | 3 | CORRIE NDABA | 3.33 | 2 | 42 | GIORGIO SCALVINI | 3.31 |
| 3 | 17 | DANILO VEIGA | 3.28 | 3 | 59 | NICOLA ZALEWSKI | 2.92 |
| 4 | 50 | SANTIAGO PIEROTTI | 3.27 | 4 | 47 | LORENZO BERNASCONI | 2.48 |
| 5 | 16 | OMRI GANDELMAN | 3 | 5 | 15 | MARTEN DE ROON | 2.48 |

PASS RISK

Measures the player's propensity to risk the pass (only successful passes are considered).

| | | | | | | | |
|---|----|-------------------|--------|---|----|----------------------|--------|
| 1 | 30 | WLADIMIRO FALCONE | 66.67% | 1 | 77 | DAVIDE ZAPPACOSTA | 27.56% |
| 2 | 17 | DANILO VEIGA | 40.82% | 2 | 17 | CHARLES DE KETELAERE | 26.12% |
| 3 | 8 | SADIK FOFANA | 31% | 3 | 47 | LORENZO BERNASCONI | 25.19% |
| 4 | 19 | LAMECK BANDA | 30.46% | 4 | 59 | NICOLA ZALEWSKI | 24.05% |
| 5 | 3 | CORRIE NDABA | 29.87% | 5 | 13 | ÉDERSON | 20.25% |

RECEIVED PRESSURE

How much the player with the ball is pressed by the opposite team.

It depends on the speed, running direction and distance from the opponent who is at a shorter distance.

| | | | | | | | |
|---|----|-------------------|--------|---|----|----------------------|--------|
| 1 | 9 | NIKOLA ŠTULIĆ | 73.5% | 1 | 90 | NIKOLA KRSTOVIĆ | 71.69% |
| 2 | 99 | WALID CHEDDIRA | 69.09% | 2 | 13 | ÉDERSON | 63.52% |
| 3 | 8 | SADIK FOFANA | 66.2% | 3 | 59 | NICOLA ZALEWSKI | 62.73% |
| 4 | 16 | OMRI GANDELMAN | 62.75% | 4 | 18 | GIACOMO RASPADORI | 61.89% |
| 5 | 29 | LASSANA COULIBALY | 61.82% | 5 | 17 | CHARLES DE KETELAERE | 61.88% |

PASS AVAILABILITY

Ability of a player to get away from opponents to receive the ball.

It is computed for all the teammates of the player in possession.

| | | | | | | | |
|---|----|---------------|--------|---|----|--------------------|--------|
| 1 | 44 | TIAGO GABRIEL | 79.67% | 1 | 47 | LORENZO BERNASCONI | 81.92% |
| 2 | 17 | DANILO VEIGA | 78.18% | 2 | 16 | RAOUL BELLANOVA | 80.22% |
| 3 | 5 | JAMIL SIEBERT | 77.54% | 3 | 42 | GIORGIO SCALVINI | 79.91% |
| 4 | 3 | CORRIE NDABA | 76.75% | 4 | 23 | SEAD KOLAŠINAC | 75.43% |
| 5 | 11 | KONAN N'DRI | 74.54% | 5 | 19 | BERAT DJIMSITI | 75.27% |

Lecce 06/04/2026 ETTORE GIARDINIERO - VIA DEL MARE 15:00

LECCE

0-3

ATALANTA



PLAYERS RANKING (ATHLETICS PERFORMANCE)

| Jog - Run - Sprint (km) | | | |
|-------------------------|--------------------------|-------|--------|
| 1 | OUMAR JACKY NGOM | Total | 11.113 |
| | 8.040 | 2.847 | 0.178 |
| 2 | SANTIAGO DANIEL PIEROTTI | Total | 10.221 |
| | 7.246 | 2.373 | 0.544 |
| 3 | JAMIL SIEBERT | Total | 9.463 |
| | 7.477 | 1.776 | 0.142 |
| 4 | CORRIE RICHARD NDABA | Total | 9.136 |
| | 7.013 | 1.758 | 0.293 |
| 5 | LAMECK BANDA | Total | 9.051 |
| | 6.809 | 1.839 | 0.320 |

| AVG Speed km/h (run) | | | |
|----------------------|--------------|-----|--------|
| 1 | N'DRI | LEC | 19.872 |
| 2 | NDABA | LEC | 19.779 |
| 3 | DANILO VEIGA | LEC | 19.726 |
| 4 | PIEROTTI | LEC | 19.688 |
| 5 | NGOM | LEC | 19.681 |

| AVG Speed km/h (sprint) | | | |
|-------------------------|---------------|-----|--------|
| 1 | PIEROTTI | LEC | 28.210 |
| 2 | BANDA | LEC | 28.196 |
| 3 | DANILO VEIGA | LEC | 27.557 |
| 4 | TIAGO GABRIEL | LEC | 27.436 |
| 5 | RAMADANI | LEC | 27.205 |

| Jog - Run - Sprint (km) | | | |
|-------------------------|---|-------|--------|
| 1 | ÉDERSON JOSÉ DOS SANTOS LOURENÇO DA SILVA | Total | 10.950 |
| | 7.824 | 2.537 | 0.542 |
| 2 | CHARLES DE KETELAERE | Total | 10.004 |
| | 7.424 | 2.237 | 0.291 |
| 3 | LORENZO BERNASCONI | Total | 9.873 |
| | 7.445 | 1.950 | 0.402 |
| 4 | SEAD KOLAŠINAC | Total | 9.774 |
| | 8.101 | 1.496 | 0.122 |
| 5 | GIORGIO SCALVINI | Total | 9.682 |
| | 8.049 | 1.472 | 0.070 |

| AVG Speed km/h (run) | | | |
|----------------------|--------------|-----|--------|
| 1 | BELLANOVA | ATA | 19.738 |
| 2 | KRSTOVIĆ | ATA | 19.688 |
| 3 | PAŠALIĆ | ATA | 19.686 |
| 4 | ZALEWSKI | ATA | 19.665 |
| 5 | DE KETELAERE | ATA | 19.661 |

| AVG Speed km/h (sprint) | | | |
|-------------------------|------------|-----|--------|
| 1 | BERNASCONI | ATA | 28.662 |
| 2 | BELLANOVA | ATA | 28.554 |
| 3 | PAŠALIĆ | ATA | 27.848 |
| 4 | ÉDERSON | ATA | 27.719 |
| 5 | ZAPPACOSTA | ATA | 27.667 |

TEAM STATS (ATHLETICS PERFORMANCE)

Distance Covered (km) 104.896

Distance Covered (km) 107.231

| Jog - Run - Sprint (km) | | |
|-------------------------|--------|-------|
| 79.749 | 21.825 | 2.593 |

| Jog - Run - Sprint (km) | | |
|-------------------------|--------|-------|
| 83.607 | 19.991 | 2.901 |

Fitness data displayed in the report are the ones collected in real time and could be different to the post-processed ones, delivered to the coaching staff

| | | | | | | | |
|---------------|---------------------------|------|-------------|---------|------------|---------------------|------------------|
| Jog: | 0-7 km/h | Run: | 7.1-15 km/h | Sprint: | 15.1+ km/h | Jog + Run + Sprint: | Distance covered |
| TOP Sprinter: | Top four players per team | | | | | | |

Lecce 06/04/2026 ETTORE GIARDINIERO - VIA DEL MARE 15:00



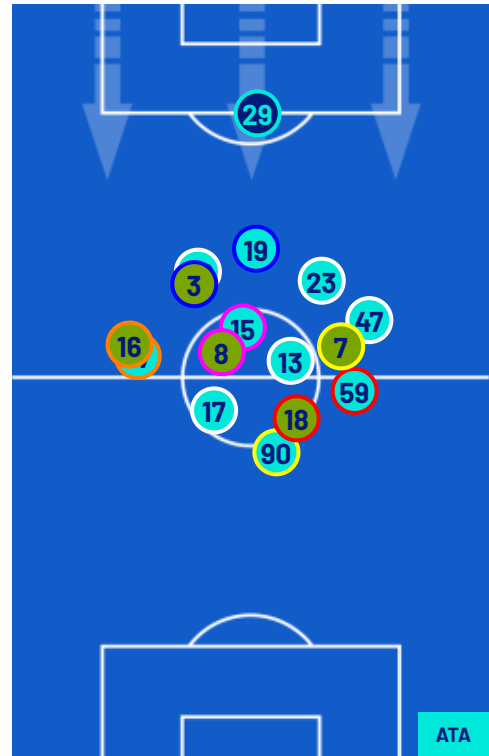
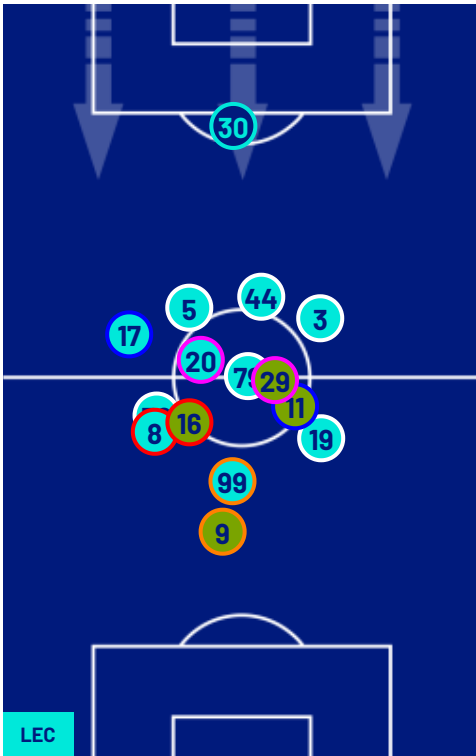
LECCE

0-3

ATALANTA



PLAYERS AVERAGE POSITIONS



- Legend:
- | | | | | |
|------------------|-------------|--------------|-----------------------------|---|
| 1st Substitution | ● Player In | ○ Player Out | ■ Player In Substitution Of | ● |
| 2nd Substitution | ● Player In | ○ Player Out | ■ Player In Substitution Of | ● |
| 3rd Substitution | ● Player In | ○ Player Out | ■ Player In Substitution Of | ● |
| 4th Substitution | ● Player In | ○ Player Out | ■ Player In Substitution Of | ● |
| 5th Substitution | ● Player In | ○ Player Out | ■ Player In Substitution Of | ● |

Lecce 06/04/2026 ETTORE GIARDINIERO - VIA DEL MARE 15:00



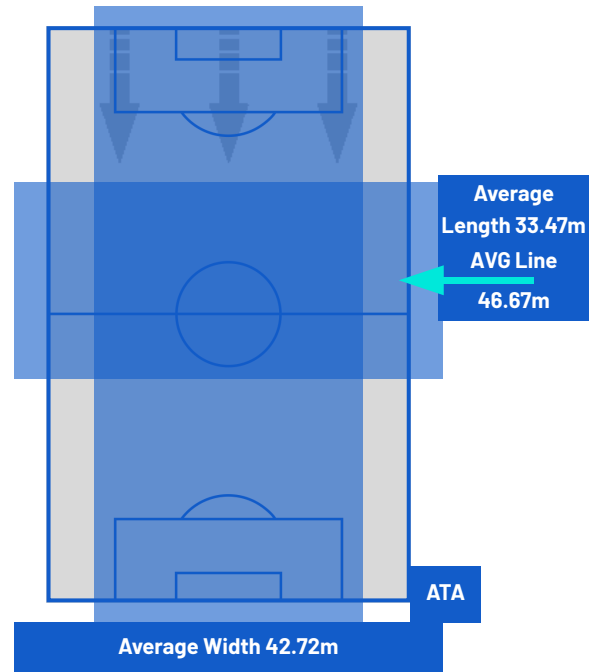
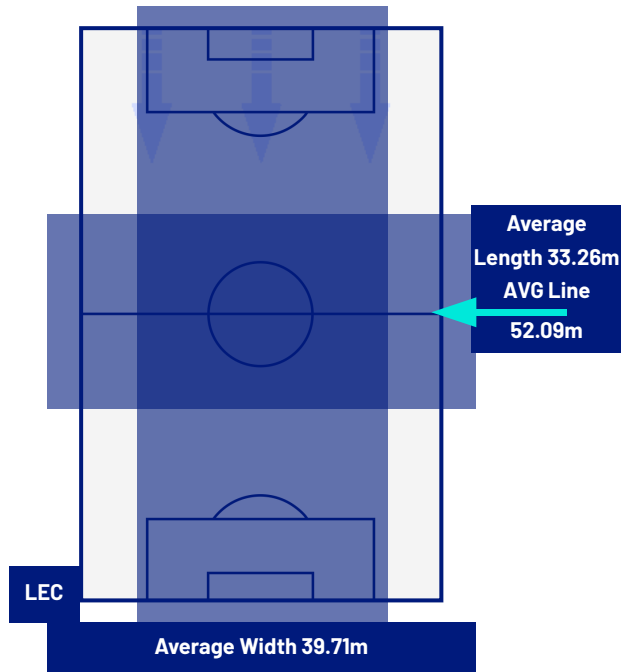
LECCE

0-3

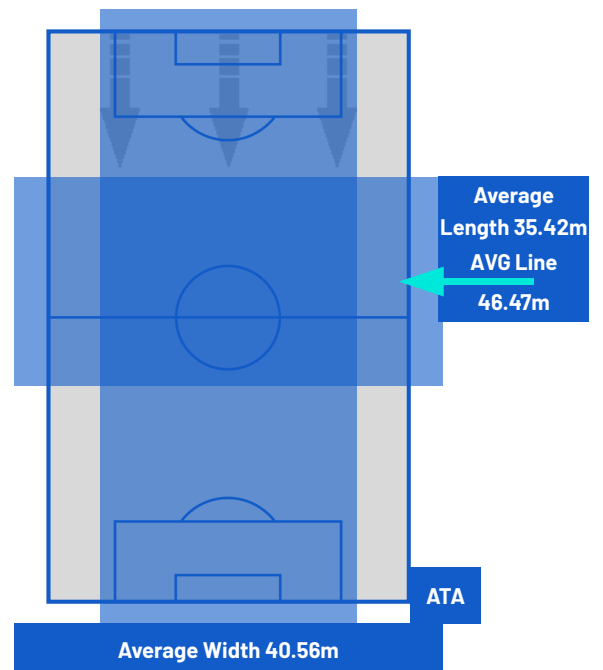
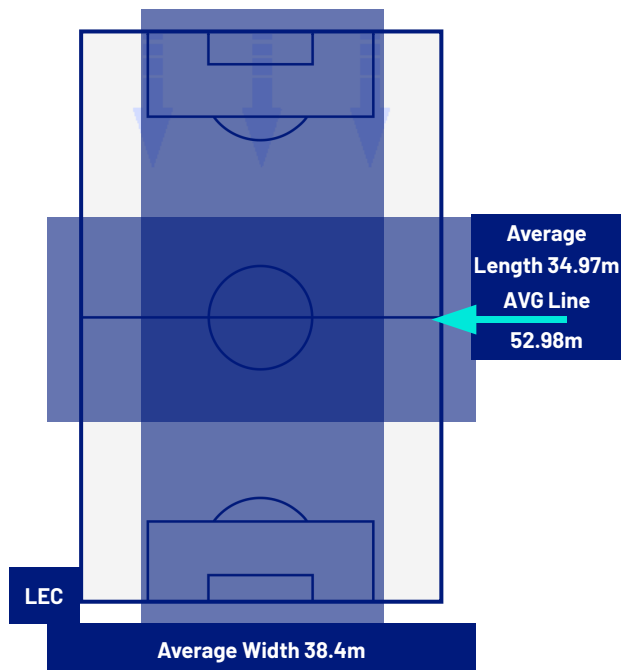
ATALANTA



TEAM'S DEFENSE POSITION 1ST HALF



TEAM'S DEFENSE POSITION 2ND HALF



Lecce 06/04/2026 ETTORE GIARDINIERO - VIA DEL MARE 15:00



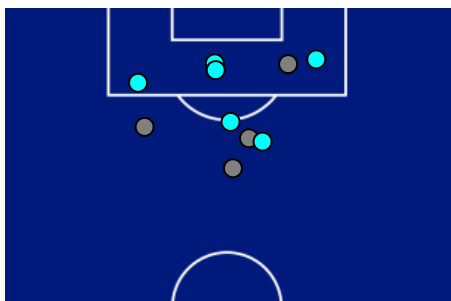
LECCE

0-3

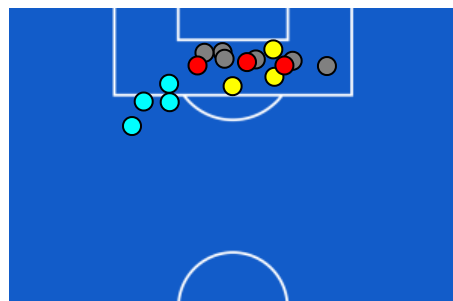
ATALANTA



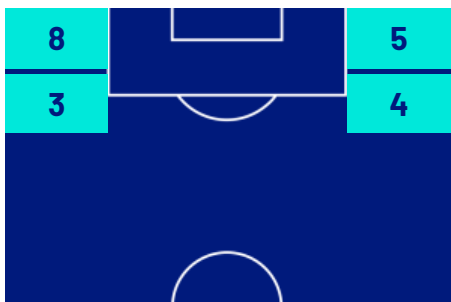
ATTEMPTS MAP



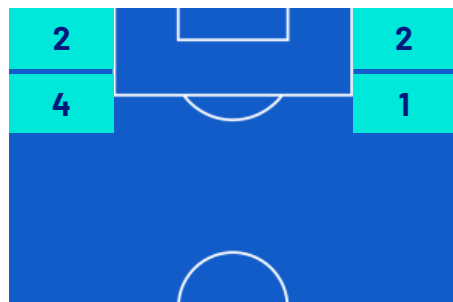
| | | |
|---|------------|---|
| 0 | Goals | 3 |
| 0 | On target | 6 |
| 4 | Off target | 6 |
| 6 | Blocked | 4 |



OPEN PLAY CROSSES MAP



| | | |
|----|-------------------|----|
| 5 | Crosses completed | 5 |
| 25 | Total crosses | 15 |
| 20 | Accuracy (%) | 33 |



| | | |
|-----|--------------------|-----|
| 600 | Total Balls Played | 750 |
| 165 | DEFENSIVE | 263 |
| 261 | MIDFIELD | 315 |
| 174 | ATTACK ZONE | 172 |

Lecce 06/04/2026 ETTORE GIARDINIERO - VIA DEL MARE 15:00

LECCE

0-3

ATALANTA



KEY PLAYERS

| | |
|--|------------|
|  OUMAR JACKY NGOM | 79 |
| Position | Midfielder |
| Date of birth | 09/03/2004 |
| Nationality | MTN |

| | |
|---|------------|
|  CHARLES DE KETELAERE | 17 |
| Position | Midfielder |
| Date of birth | 10/03/2001 |
| Nationality | BEL |

| | | |
|--------------------------------------|--------------|------------------|
| Jog 73% - Run 25% - Sprint 2% | | Km 11.113 |
| 8.040 | 2.847 | 0.178 |

| | | |
|--------------------------------------|--------------|------------------|
| Jog 75% - Run 22% - Sprint 3% | | Km 10.004 |
| 7.424 | 2.237 | 0.291 |

| Mvp Stats | |
|--------------------------------|--------------|
| Minutes Played | 96 |
| Goals | 0 |
| Scoring Chances | 0 |
| Attempts | 1 |
| Attempts on target | 0 (0) |
| Assists | 0 |
| Balls Played | 47 |
| Passes Completed | 34 |
| Passes Completed/Attempted (%) | 89 |
| Key Passes | 1 |
| Gained Possessions | 4 |
| Fouls Suffered | 0 |

| Mvp Stats | |
|--------------------------------|--------------|
| Minutes Played | 96 |
| Goals | 0 |
| Scoring Chances | 0 |
| Attempts | 2 |
| Attempts on target | 1 (0) |
| Assists | 2 |
| Balls Played | 59 |
| Passes Completed | 44 |
| Passes Completed/Attempted (%) | 89 |
| Key Passes | 4 |
| Gained Possessions | 1 |
| Fouls Suffered | 0 |

The above statistics are considered final 24 hours after the end of the match.

The disciplinary sanctions are unofficial, as they come from real-time tracking during the match. They will become official following approval by the relevant bodies.

In the case of uncertainty over the identity of a goalscorer, Lega Serie A will confirm this the day after each round of matches is completed.

The official data providers are Kama, Hawk-Eye, Math and Sport.